

PACO22272

Product Information

Size:

100ul

Reactivity:

Human

Source:

Rabbit

Isotype:

IgG

Applications:

ELISA, WB

Recommended dilutions:

ELISA:1:2000-1:10000, WB:1:500-1:3000

Protein Background:

This gene belongs to the chemokine-like factor gene superfamily, a novel family that links the chemokine and the transmembrane 4 superfamilies of signaling molecules. The protein encoded by this gene may play an important role in testicular development.

Gene ID:

CMTM2

Uniprot

Q8TAZ6

Synonyms:

chemokine-like factor 2; CKLF-like MARVEL transmembrane domain containing 2; CKLF2; CKLFSF2;

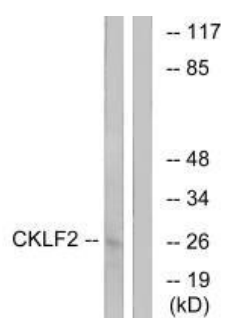
Immunogen:

Synthesized peptide derived from internal of human CKLF2.

Storage:

Rabbit IgG in phosphate buffered saline (without Mg²⁺ and Ca²⁺), pH 7.4, 150mM NaCl, 0.02% sodium azide and 50% glycerol.

Product Images



Western blot analysis of extracts from K562 cells, using CKLF2 antibody.