

## Product Information

**Size:**

100ul

**Reactivity:**

Human

**Source:**

Rabbit

**Isotype:**

IgG

**Applications:**

ELISA, WB

**Recommended dilutions:**

ELISA:1:2000-1:10000, WB:1:500-1:3000

**Protein Background:**

Glycosidase probably involved in the intestinal absorption and metabolism of dietary flavonoid glycosides. Able to hydrolyze a broad variety of glycosides including phytoestrogens, flavonols, flavones, flavanones and cyanogens. Possesses beta-glycosylceramidase activity and may be involved in a nonlysosomal catabolic pathway of glycosylceramide.

**Gene ID:**

GBA3

**Uniprot**

Q9H227

**Synonyms:**

Cytosolic beta-glucosidase; EC 3.2.1.21; Cytosolic beta-glucosidase-like protein 1;

**Immunogen:**

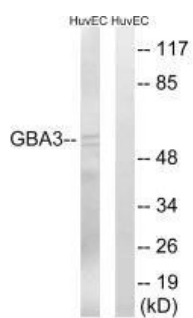
Synthesized peptide derived from internal of human GBA3.

**Storage:**

Rabbit IgG in phosphate buffered saline (without Mg<sup>2+</sup> and Ca<sup>2+</sup>), pH 7.4, 150mM NaCl, 0.02% sodium azide and 50% glycerol.

## Product Images

---



Western blot analysis of extracts from HuvEc cells, using GBA3 antibody.