

## Product Information

**Size:**

100ul

**Reactivity:**

Human

**Source:**

Rabbit

**Isotype:**

IgG

**Applications:**

ELISA, WB

**Recommended dilutions:**

ELISA:1:2000-1:10000, WB:1:500-1:3000

**Protein Background:**

DNA-dependent RNA polymerase catalyzes the transcription of DNA into RNA using the four ribonucleoside triphosphates as substrates. Component of RNA polymerase I which synthesizes ribosomal RNA precursors. Isoform 1 is involved in UBTF-activated transcription, presumably at a step following PIC formation. Isoform 2 has been described as a component of preformed T-cell receptor (TCR) complex.

**Gene ID:**

CD3EAP

**Uniprot**

O15446

**Synonyms:**

antisense to ERCC-1; CAST; CD3-epsilon-associated protein; CD3e-associated protein; CD3EAP

**Immunogen:**

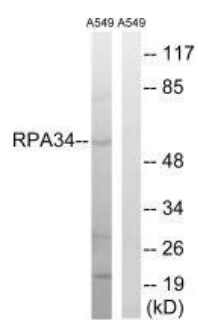
Synthesized peptide derived from internal of human CD3EAP.

**Storage:**

Rabbit IgG in phosphate buffered saline (without Mg<sup>2+</sup> and Ca<sup>2+</sup>), pH 7.4, 150mM NaCl, 0.02% sodium azide and 50% glycerol.

## Product Images

---



Western blot analysis of extracts from A549 cells, using CD3EAP antibody.