

Product Information

Size:

100ul

Reactivity:

Human

Source:

Rabbit

Isotype:

IgG

Applications:

ELISA, WB

Recommended dilutions:

ELISA:1:2000-1:10000, WB:1:500-1:3000

Protein Background:

Dual specificity protein kinase activity catalyzing autophosphorylation and phosphorylation of exogenous substrates on both serine/threonine and tyrosine residues. Probably plays a central role at and after the meiotic phase of spermatogenesis By similarity.

Gene ID:

TESK1

Uniprot

Q15569

Synonyms:

EC 2.7.12.1; TES1; Testicular protein kinase 1; Testis-specific protein kinase 1;

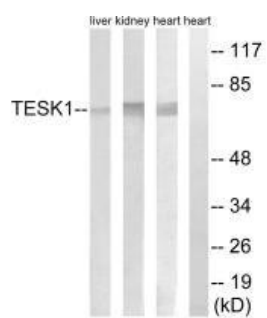
Immunogen:

Synthesized peptide derived from internal of human TESK1.

Storage:

Rabbit IgG in phosphate buffered saline (without Mg²⁺ and Ca²⁺), pH 7.4, 150mM NaCl, 0.02% sodium azide and 50% glycerol.

Product Images



Western blot analysis of extracts from rat heart cells, rat kidney cells and rat liver cells, using TESK1 antibody.