

PACO22321

---

## Product Information

**Size:**

100ul

**Reactivity:**

Human

**Source:**

Rabbit

**Isotype:**

IgG

**Applications:**

ELISA, WB

**Recommended dilutions:**

ELISA:1:2000-1:10000, WB:1:500-1:3000

**Protein Background:**

E3 ubiquitin-protein ligase. Together with NLK, involved in the ubiquitination and degradation of TCF/LEF. Also exhibits auto-ubiquitination activity in combination with UBE2K. May act as a negative regulator in the Wnt/beta-catenin-mediated signaling pathway.

**Gene ID:**

RNF138

**Uniprot**

Q8WVD3

**Synonyms:**

E3 ubiquitin-protein ligase RNF138; EC 6.3.2. -; RING finger protein 138; Nemo-like kinase-associated RING finger protein; NLK-associated RING finger protein

**Immunogen:**

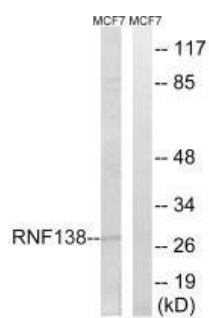
Synthesized peptide derived from internal of human RNF138.

**Storage:**

Rabbit IgG in phosphate buffered saline (without Mg<sup>2+</sup> and Ca<sup>2+</sup>), pH 7.4, 150mM NaCl, 0.02% sodium azide and 50% glycerol.

## Product Images

---



Western blot analysis of extracts from MCF-7 cells, using RNF138 antibody.