

Product Information

Size:

100ul

Reactivity:

Human, Mouse

Source:

Rabbit

Isotype:

IgG

Applications:

ELISA, WB

Recommended dilutions:

ELISA:1:2000-1:10000, WB:1:500-1:3000

Protein Background:

Condensing enzyme that catalyzes the synthesis of both saturated and monounsaturated very long chain fatty acids (VLCFAs). Exhibits activity toward saturated C18 to C26 acyl-CoA substrates, with the highest activity towards C22:0 acyl-CoA. Important for saturated C24:0 and monounsaturated C24:1 sphingolipid synthesis. Indirectly inhibits RPE65 via production of VLCFAs.

Gene ID:

ELOVL1

Uniprot

Q9BW60

Synonyms:

Elongation of very long chain fatty acids protein 1; ELOVL1; SSC1; CGI-88;

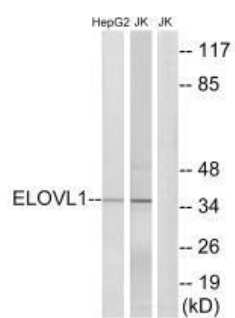
Immunogen:

Synthesized peptide derived from internal of human ELOVL1.

Storage:

Rabbit IgG in phosphate buffered saline (without Mg²⁺ and Ca²⁺), pH 7.4, 150mM NaCl, 0.02% sodium azide and 50% glycerol.

Product Images



Western blot analysis of extracts from HepG2 cells and Jurkat cells, using ELOVL1 antibody.