

Product Information

Size:

100ul

Reactivity:

Human

Source:

Rabbit

Isotype:

IgG

Applications:

ELISA, WB

Recommended dilutions:

ELISA:1:2000-1:10000, WB:1:500-1:3000

Protein Background:

Involved in the base excision repair (BER) pathway, by catalyzing the poly(ADP-ribose)ation of a limited number of acceptor proteins involved in chromatin architecture and in DNA metabolism. This modification follows DNA damages and appears as an obligatory step in a detection/signaling pathway leading to the reparation of DNA strand breaks.

Gene ID:

PARP2

Uniprot

Q9UGN5

Synonyms:

Poly [ADP-ribose] polymerase 2; PARP-2; NAD(+) ADP-ribosyltransferase 2; Poly[ADP-ribose] synthetase 2; pADPRT-2

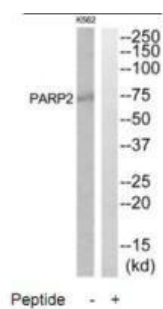
Immunogen:

Synthesized peptide derived from internal of human PARP2.

Storage:

Rabbit IgG in phosphate buffered saline (without Mg²⁺ and Ca²⁺), pH 7.4, 150mM NaCl, 0.02% sodium azide and 50% glycerol.

Product Images



Western blot analysis of extracts from K562 and HuvEc cells, using PARP2 antibody.