

PACO22352

Product Information

Size:

100ul

Reactivity:

Human

Source:

Rabbit

Isotype:

IgG

Applications:

ELISA, WB

Recommended dilutions:

ELISA:1:2000-1:10000, WB:1:500-1:3000

Protein Background:

Required for the mitochondrial tubular network and cristae organization. Involved in apoptotic release of cytochrome c.

Gene ID:

GHITM

Uniprot

Q9H3K2

Synonyms:

derp2; dkfzp566c0746; flj26584; ghitm; growth hormone inducible transmembrane protein

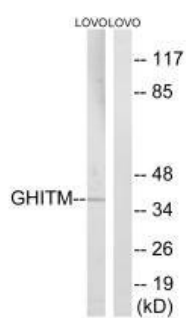
Immunogen:

Synthesized peptide derived from internal of human GHITM.

Storage:

Rabbit IgG in phosphate buffered saline (without Mg²⁺ and Ca²⁺), pH 7.4, 150mM NaCl, 0.02% sodium azide and 50% glycerol.

Product Images



Western blot analysis of extracts from LOVO cells, using GHITM antibody.