

GDF7 Antibody



PACO22355

Product Information

Size:

100ul

Reactivity:

Human

Source:

Rabbit

Isotype:

IgG

Applications:

ELISA, WB

Recommended dilutions:

ELISA:1:2000-1:10000, WB:1:500-1:3000

Protein Background:

May play an active role in the motor area of the primate neocortex By similarity.

Gene ID:

GDF7

Uniprot

Q7Z4P5

Synonyms:

Growth/differentiation factor 7; GDF-7;

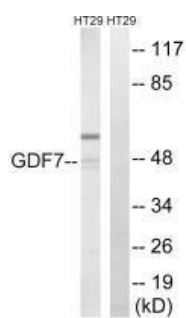
Immunogen:

Synthesized peptide derived from internal of human GDF7.

Storage:

Rabbit IgG in phosphate buffered saline (without Mg²⁺ and Ca²⁺), pH 7.4, 150mM NaCl, 0.02% sodium azide and 50% glycerol.

Product Images



Western blot analysis of extracts from HT-29 cells, using GDF7 antibody.