

PACO22358

Product Information

Size:

100ul

Reactivity:

Human

Source:

Rabbit

Isotype:

IgG

Applications:

ELISA, WB

Recommended dilutions:

ELISA:1:2000-1:10000, WB:1:500-1:3000

Protein Background:

May play a role in regulating lymphocyte apoptosis By similarity. Exhibits intrinsic GTPase activity. Shows a higher affinity for GDP over GTP (about 12-fold higher), and binding shows an absolute requirement for magnesium.

Gene ID:

GIMAP4

Uniprot

Q9NUV9

Synonyms:

GIMA4; GTPase; IMAP 4; IAN1; IMAP family member 4

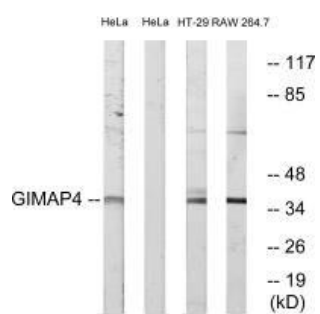
Immunogen:

Synthesized peptide derived from internal of human GIMAP4.

Storage:

Rabbit IgG in phosphate buffered saline (without Mg²⁺ and Ca²⁺), pH 7.4, 150mM NaCl, 0.02% sodium azide and 50% glycerol.

Product Images



Western blot analysis of extracts from HeLa cells, HT-29 cells and RAW264.7 cells, using GIMAP4 antibody.