

NKX2-6 Antibody



PACO22379

Product Information

Size:

100ul

Reactivity:

Human

Source:

Rabbit

Isotype:

IgG

Applications:

ELISA, WB

Recommended dilutions:

ELISA:1:2000-1:10000, WB:1:500-1:3000

Protein Background:

In conjunction with NKX2-5, may play a role in both pharyngeal and cardiac embryonic development By similarity.

Gene ID:

NKX2-6

Uniprot

A6NCS4

Synonyms:

CSX2; homeobox Nkx-2.6; NK2 transcription factor related; 6; NKX26

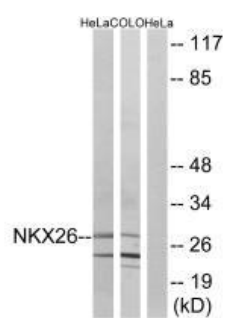
Immunogen:

Synthesized peptide derived from internal of human NKX26.

Storage:

Rabbit IgG in phosphate buffered saline (without Mg²⁺ and Ca²⁺), pH 7.4, 150mM NaCl, 0.02% sodium azide and 50% glycerol.

Product Images



Western blot analysis of extracts from HeLa cells and COLO cells, using NKX26 antibody.