

SIX5 Antibody



PACO22380

Product Information

Size:

100ul

Reactivity:

Human, Mouse

Source:

Rabbit

Isotype:

IgG

Applications:

ELISA, WB

Recommended dilutions:

ELISA:1:2000-1:10000, WB:1:500-1:3000

Protein Background:

Transcription factor that is thought to be involved in regulation of organogenesis. May be involved in determination and maintenance of retina formation. Binds a 5'-GGTGTCTAG-3' motif present in the ARE regulatory element of ATP1A1. Binds a 5'-TCA[AG][AG]TTNC-3' motif present in the MEF3 element in the myogenin promoter, and in the IGFBP5 promoter By similarity. Thought to be regulated by association with Dach and Eya proteins, and seems to be coactivated by EYA1, EYA2 and EYA3 By similarity.

Gene ID:

SIX5

Uniprot

Q8N196

Synonyms:

DM locus-associated homeodomain protein; DMAHP; homeobox protein SIX5;

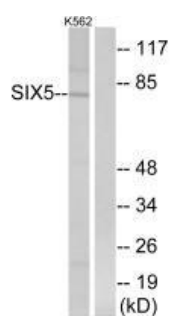
Immunogen:

Synthesized peptide derived from internal of human SIX5.

Storage:

Rabbit IgG in phosphate buffered saline (without Mg²⁺ and Ca²⁺), pH 7.4, 150mM NaCl, 0.02% sodium azide and 50% glycerol.

Product Images



Western blot analysis of extracts from K562 cells, using SIX5 antibody.