

Product Information

Size:

100ul

Reactivity:

Human

Source:

Rabbit

Isotype:

IgG

Applications:

ELISA, WB

Recommended dilutions:

ELISA:1:2000-1:10000, WB:1:500-1:3000

Protein Background:

The leucine-rich repeat (LRR) family of proteins, including LRG1, have been shown to be involved in protein-protein interaction, signal transduction, and cell adhesion and development. LRG1 is expressed during granulocyte differentiation (O'Donnell et al. , 2002). [supplied by OMIM, Mar 2008].

Gene ID:

LRG1

Uniprot

P02750

Synonyms:

1300008B03Rik; 2310031E04Rik; A2GL; HMFT1766; leucine rich alpha 2 glycoprotein

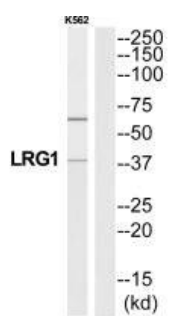
Immunogen:

Synthesized peptide derived from C-terminal of human A2GL.

Storage:

Rabbit IgG in phosphate buffered saline (without Mg²⁺ and Ca²⁺), pH 7.4, 150mM NaCl, 0.02% sodium azide and 50% glycerol.

Product Images



Western blot analysis of extracts from K562 cells, using A2GL antibody.