

PACO22396

---

## Product Information

**Size:**

100ul

**Reactivity:**

Human

**Source:**

Rabbit

**Isotype:**

IgG

**Applications:**

ELISA, WB

**Recommended dilutions:**

ELISA:1:2000-1:10000, WB:1:500-1:3000

**Protein Background:**

Belongs to the LDLR family. 2 isoforms of the human protein are produced by alternative splicing.

**Gene ID:**

LRP11

**Uniprot**

Q86VZ4

**Synonyms:**

low density lipoprotein receptor-related protein 11; MANSC3;

**Immunogen:**

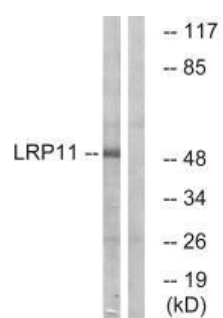
Synthesized peptide derived from internal of human LRP11.

**Storage:**

Rabbit IgG in phosphate buffered saline (without Mg<sup>2+</sup> and Ca<sup>2+</sup>), pH 7.4, 150mM NaCl, 0.02% sodium azide and 50% glycerol.

## Product Images

---



Western blot analysis of extracts from Jurkat cells, using LRP11 antibody.