

MIA2 Antibody



PACO22407

Product Information

Size:

100ul

Reactivity:

Human

Source:

Rabbit

Isotype:

IgG

Applications:

ELISA, WB

Recommended dilutions:

ELISA:1:2000-1:10000, WB:1:500-1:3000

Protein Background:

May play a role in the pathophysiology of liver disease and may serve as a marker of liver damage.

Gene ID:

MIA2

Uniprot

Q96PC5

Synonyms:

Melanoma inhibitory activity protein 2;

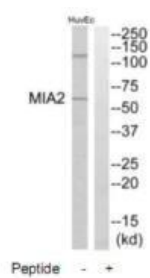
Immunogen:

Synthesized peptide derived from internal of human MIA2.

Storage:

Rabbit IgG in phosphate buffered saline (without Mg²⁺ and Ca²⁺), pH 7.4, 150mM NaCl, 0.02% sodium azide and 50% glycerol.

Product Images



Western blot analysis of extracts from HuvEc cells, using MIA2 antibody.