

---

## Product Information

**Size:**

100ul

**Reactivity:**

Human, Mouse, Rat

**Source:**

Rabbit

**Isotype:**

IgG

**Applications:**

ELISA, WB

**Recommended dilutions:**

ELISA:1:2000-1:10000, WB:1:500-1:3000

**Protein Background:**

Serine protease that catalyzes the first step in the proteolytic activation of the sterol regulatory element-binding proteins (SREBPs). Other known substrates are BDNF, GNPTAB and ATF6. Cleaves after hydrophobic or small residues, provided that Arg or Lys is in position P4. Cleaves known substrates after Arg-Ser-Val-Leu (SERBP-2), Arg-His-Leu-Leu (ATF6), Arg-Gly-Leu-Thr (BDNF) and its own propeptide after Arg-Arg-Leu-Leu. Mediates the protein cleavage of GNPTAB into subunit alpha and beta, thereby participating in biogenesis of lysosomes.

**Gene ID:**

MBTPS1

**Uniprot**

Q14703

**Synonyms:**

Endopeptidase S1P; KIAA0091; MBTP1; MBTPS1; membrane-bound transcription factor peptidase

**Immunogen:**

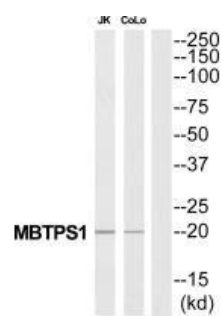
Synthesized peptide derived from C-terminal of human MBTPS1.

**Storage:**

Rabbit IgG in phosphate buffered saline (without Mg<sup>2+</sup> and Ca<sup>2+</sup>), pH 7.4, 150mM NaCl, 0.02% sodium azide and 50% glycerol.

## Product Images

---



Western blot analysis of extracts from Jurkat/COLO205 cells, using MBTPS1 antibody.