

Product Information

Size:

100ul

Reactivity:

Human

Source:

Rabbit

Isotype:

IgG

Applications:

ELISA, WB

Recommended dilutions:

ELISA:1:2000-1:10000, WB:1:500-1:3000

Protein Background:

Involved in organization of the bipolar mitotic spindle. Required for bipolar spindle assembly, mitosis progression and cytokinesis. May act by stabilizing interphase microtubules.

Gene ID:

MAP9

Uniprot

Q49MG5

Synonyms:

Microtubule-associated protein 9; Aster-associated protein; ASAP;

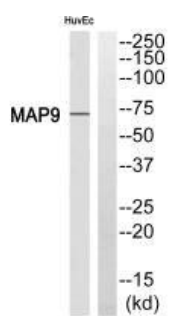
Immunogen:

Synthesized peptide derived from internal of human MAP9.

Storage:

Rabbit IgG in phosphate buffered saline (without Mg²⁺ and Ca²⁺), pH 7.4, 150mM NaCl, 0.02% sodium azide and 50% glycerol.

Product Images



Western blot analysis of extracts from HuvEc cell, using MAP9 antibody.