
Product Information

Size:

100ul

Reactivity:

Human

Source:

Rabbit

Isotype:

IgG

Applications:

ELISA, WB

Recommended dilutions:

ELISA:1:2000-1:10000, WB:1:500-1:3000

Protein Background:

Acts as a phosphoinositide 5- and phosphoinositide 6-phosphatase and regulates cellular levels of inositol pentakisphosphate (InsP5) and inositol hexakisphosphate (InsP6). Also acts as a 2,3-bisphosphoglycerate 3-phosphatase, by mediating the dephosphorylation of 2,3-bisphosphoglycerate (2,3-BPG) to produce phospho-D-glycerate without formation of 3-phosphoglycerate. May play a role in bone development (endochondral ossification).

Gene ID:

MINPP1

Uniprot

Q9UNW1

Synonyms:

EC 3.1.3.62; inositol (1; 3; 4; 5)-tetrakisphosphate 3-phosphatase

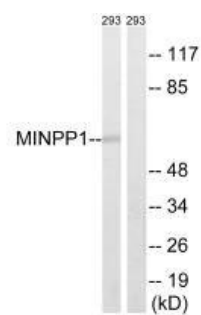
Immunogen:

Synthesized peptide derived from internal of human MINPP1.

Storage:

Rabbit IgG in phosphate buffered saline (without Mg²⁺ and Ca²⁺), pH 7.4, 150mM NaCl, 0.02% sodium azide and 50% glycerol.

Product Images



Western blot analysis of extracts from 293 cells, using MINPP1 antibody.