

PACO22479

Product Information

Size:

100ul

Reactivity:

Human

Source:

Rabbit

Isotype:

IgG

Applications:

ELISA, WB

Recommended dilutions:

ELISA:1:2000-1:10000, WB:1:500-1:3000

Protein Background:

May function as a tissue-specific nuclear mRNA export factor.

Gene ID:

NXF3

Uniprot

Q9H4D5

Synonyms:

nuclear RNA export factor 3; TAP-like 3; TAPL-3; TAPL3;

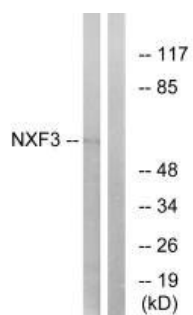
Immunogen:

Synthesized peptide derived from internal of human NXF3.

Storage:

Rabbit IgG in phosphate buffered saline (without Mg²⁺ and Ca²⁺), pH 7.4, 150mM NaCl, 0.02% sodium azide and 50% glycerol.

Product Images



Western blot analysis of extracts from MCF-7 cells, using NXF3 antibody.