

NR4A3 Antibody



PACO22488

Product Information

Size:

100ul

Reactivity:

Human

Source:

Rabbit

Isotype:

IgG

Applications:

ELISA, WB

Recommended dilutions:

ELISA:1:2000-1:10000, WB:1:500-1:3000

Protein Background:

Binds to the B1A response-element.

Gene ID:

NR4A3

Uniprot

Q92570

Synonyms:

Nuclear receptor subfamily 4 group A member 3; Nuclear hormone receptor NOR-1; Neuron-derived orphan receptor 1; Mitogen-induced nuclear orphan receptor;

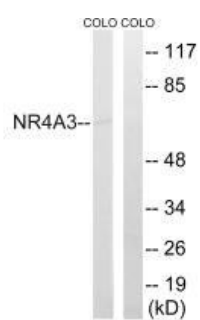
Immunogen:

Synthesized peptide derived from internal of human NR4A3.

Storage:

Rabbit IgG in phosphate buffered saline (without Mg²⁺ and Ca²⁺), pH 7.4, 150mM NaCl, 0.02% sodium azide and 50% glycerol.

Product Images



Western blot analysis of extracts from COLO cells, using NR4A3 antibody.