
Product Information

Size:

100ul

Reactivity:

Human, Mouse, Rat

Source:

Rabbit

Isotype:

IgG

Applications:

ELISA, WB

Recommended dilutions:

ELISA:1:2000-1:10000, WB:1:500-1:3000

Protein Background:

Acts as a transcriptional regulator of muscle creatine kinase (MCK) and so has a role in the establishment of diverse mesodermal muscle types. The protein binds to an A/T-rich element in the muscle creatine enhancer By similarity.

Gene ID:

PRRX1

Uniprot

P54821

Synonyms:

Homeobox protein PHOX1; paired mesoderm homeo box 1; paired mesoderm homeobox 1 isoform pmx-1b; Paired mesoderm homeobox protein 1; paired related homeobox 1

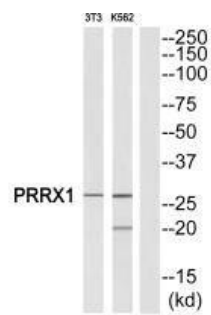
Immunogen:

Synthesized peptide derived from Internal of human PRRX1.

Storage:

Rabbit IgG in phosphate buffered saline (without Mg²⁺ and Ca²⁺), pH 7.4, 150mM NaCl, 0.02% sodium azide and 50% glycerol.

Product Images



Western blot analysis of extracts from NIH-3T3/K562 cells, using PRRX1 antibody.