

PITPNB Antibody



PACO22500

Product Information

Size:

100ul

Reactivity:

Human, Mouse

Source:

Rabbit

Isotype:

IgG

Applications:

ELISA, WB

Recommended dilutions:

ELISA:1:2000-1:10000, WB:1:500-1:3000

Protein Background:

Catalyzes the transfer of PtdIns and phosphatidylcholine between membranes.

Gene ID:

PITPNB

Uniprot

P48739

Synonyms:

Phosphatidylinositol transfer protein beta isoform; PI-TP-beta; PI-TPbeta; PIPNB; PPI2

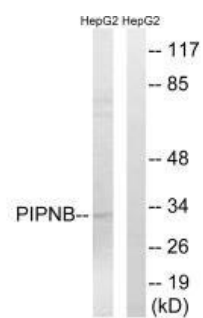
Immunogen:

Synthesized peptide derived from internal of human PITPNB.

Storage:

Rabbit IgG in phosphate buffered saline (without Mg²⁺ and Ca²⁺), pH 7.4, 150mM NaCl, 0.02% sodium azide and 50% glycerol.

Product Images



Western blot analysis of extracts from HepG2 cells, using PIPNB antibody.