

N4BP2L2 Antibody



PACO22504

Product Information

Size:

100ul

Reactivity:

Human, Mouse

Source:

Rabbit

Isotype:

IgG

Applications:

ELISA, WB

Recommended dilutions:

ELISA:1:2000-1:10000, WB:1:500-1:3000

Protein Background:

3 isoforms of the human protein are produced by alternative splicing.

Gene ID:

N4BP2L2

Uniprot

Q92802

Synonyms:

NEDD4-binding protein 2-like 2; Phosphonoformate immuno-associated protein 5; N4BP2L2; CG005; PFAAP5

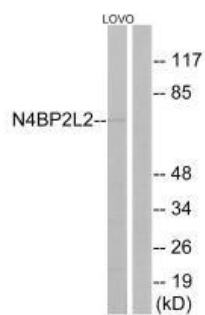
Immunogen:

Synthesized peptide derived from internal of human N4BP2L2.

Storage:

Rabbit IgG in phosphate buffered saline (without Mg²⁺ and Ca²⁺), pH 7.4, 150mM NaCl, 0.02% sodium azide and 50% glycerol.

Product Images



Western blot analysis of extracts from LOVO cells, using N4BP2L2 antibody.