

SERPINA5 Antibody



PACO22506

Product Information

Size:

100ul

Reactivity:

Human

Source:

Rabbit

Isotype:

IgG

Applications:

ELISA, WB

Recommended dilutions:

ELISA:1:2000-1:10000, WB:1:500-1:3000

Protein Background:

Gene ID:

SERPINA5

Uniprot

P05154

Synonyms:

acrosomal serine protease inhibitor; IPSP; PAI-3; PAI3; PCI

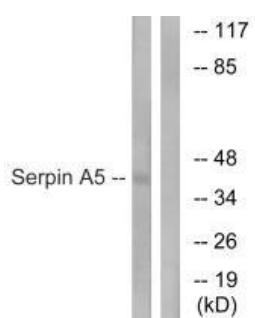
Immunogen:

Synthesized peptide derived from internal of human Serpin A5.

Storage:

Rabbit IgG in phosphate buffered saline (without Mg²⁺ and Ca²⁺), pH 7.4, 150mM NaCl, 0.02% sodium azide and 50% glycerol.

Product Images



Western blot analysis of extracts from Jurkat cells, using Serpin A5 antibody.