

PACO22509

---

## Product Information

**Size:**

100ul

**Reactivity:**

Human

**Source:**

Rabbit

**Isotype:**

IgG

**Applications:**

ELISA, WB

**Recommended dilutions:**

ELISA:1:2000-1:10000, WB:1:500-1:3000

**Protein Background:**

Probable potassium channel subunit. No channel activity observed in heterologous systems. May need to associate with another protein to form a functional channel. By similarity.

**Gene ID:**

KCNK12

**Uniprot**

Q9HB15

**Synonyms:**

Potassium channel subfamily K member 12; Tandem pore domain halothane-inhibited potassium channel 2; THIK-2;

**Immunogen:**

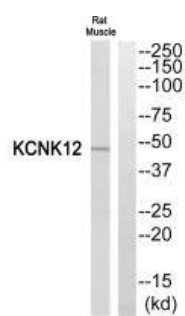
Synthesized peptide derived from C-terminal of human KCNK12.

**Storage:**

Rabbit IgG in phosphate buffered saline (without Mg<sup>2+</sup> and Ca<sup>2+</sup>), pH 7.4, 150mM NaCl, 0.02% sodium azide and 50% glycerol.

## Product Images

---



Western blot analysis of extracts from Rat Muscle cells, using KCNK12 antibody.