

---

## Product Information

**Size:**

100ul

**Reactivity:**

Human

**Source:**

Rabbit

**Isotype:**

IgG

**Applications:**

ELISA, WB

**Recommended dilutions:**

ELISA:1:2000-1:10000, WB:1:500-1:3000

**Protein Background:**

Pore-forming (alpha) subunit of voltage-gated non-inactivating delayed rectifier potassium channel. Channel properties may be modulated by cAMP and subunit assembly. Mediates IK(NI) current in myoblasts.

**Gene ID:**

KCNH1

**Uniprot**

O95259

**Synonyms:**

Potassium voltage-gated channel subfamily H member 1; Voltage-gated potassium channel subunit Kv10.1; Ether-a-go-go potassium channel 1; hEAG1; h-eag

**Immunogen:**

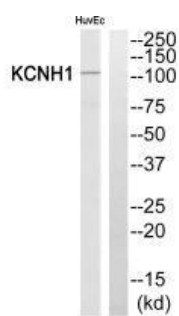
Synthesized peptide derived from internal of human KCNH1.

**Storage:**

Rabbit IgG in phosphate buffered saline (without Mg<sup>2+</sup> and Ca<sup>2+</sup>), pH 7.4, 150mM NaCl, 0.02% sodium azide and 50% glycerol.

## Product Images

---



Western blot analysis of extracts from HuvEc cells, using KCNH1 antibody.