

PACO22519

---

## Product Information

**Size:**

100ul

**Reactivity:**

Human, Mouse, Rat

**Source:**

Rabbit

**Isotype:**

IgG

**Applications:**

ELISA, WB

**Recommended dilutions:**

ELISA:1:2000-1:10000, WB:1:500-1:3000

**Protein Background:**

Associates with the spliceosome late in the splicing pathway and may function in the second step of pre-mRNA splicing.

**Gene ID:**

CDC40

**Uniprot**

O60508

**Synonyms:**

cell division cycle 40; EH-binding protein 3; EHB3; pre-mRNA splicing factor 17; pre-mRNA-processing factor 17

**Immunogen:**

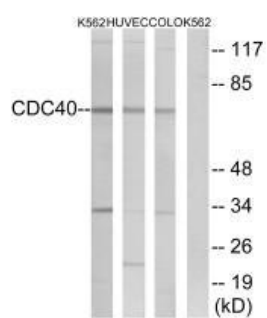
Synthesized peptide derived from internal of human CDC40.

**Storage:**

Rabbit IgG in phosphate buffered saline (without Mg<sup>2+</sup> and Ca<sup>2+</sup>), pH 7.4, 150mM NaCl, 0.02% sodium azide and 50% glycerol.

## Product Images

---



Western blot analysis of extracts from K562 cells, HUVEC cells and COLO cells, using CDC40 antibody.