

PRPF39 Antibody



PACO22520

Product Information

Size:

100ul

Reactivity:

Human, Mouse

Source:

Rabbit

Isotype:

IgG

Applications:

ELISA, WB

Recommended dilutions:

ELISA:1:2000-1:10000, WB:1:500-1:3000

Protein Background:

Involved in pre-mRNA splicing By similarity.

Gene ID:

PRPF39

Uniprot

Q86UA1

Synonyms:

flj11128; flj20666; flj45460; mgc149842; mgc149843

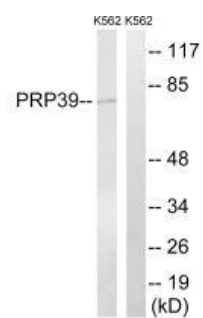
Immunogen:

Synthesized peptide derived from internal of human PRPF39.

Storage:

Rabbit IgG in phosphate buffered saline (without Mg²⁺ and Ca²⁺), pH 7.4, 150mM NaCl, 0.02% sodium azide and 50% glycerol.

Product Images



Western blot analysis of extracts from K562 cells, using PRPF39 antibody.