

## Product Information

**Size:**

100ul

**Reactivity:**

Human

**Source:**

Rabbit

**Isotype:**

IgG

**Applications:**

ELISA, WB

**Recommended dilutions:**

ELISA:1:2000-1:10000, WB:1:500-1:3000

**Protein Background:**

Regulator of protein phosphatase 1 (PP1) that acts as a positive regulator of pulmonary endothelial cell (EC) barrier function. Involved in PKA-mediated moesin dephosphorylation which is important in EC barrier protection against thrombin stimulation. Promotes the interaction of PPP1CA with RPSA/LAMR1 and in turn facilitates the dephosphorylation of RPSA/LAMR1. Involved in the regulation of endothelial cell filopodia extension. May be a downstream target for TGF-beta1 signaling cascade in endothelial cells.

**Gene ID:**

PPP1R16B

**Uniprot**

Q96T49

**Synonyms:**

TGF-beta-inhibited membrane-associated protein; hTIMAP; CAAX box protein TIMAP; Ankyrin repeat domain-containing protein 4;

**Immunogen:**

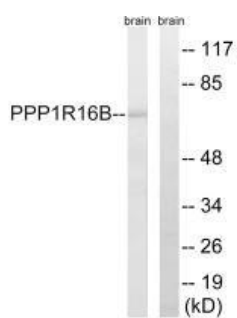
Synthesized peptide derived from internal of human PPP1R16B.

**Storage:**

Rabbit IgG in phosphate buffered saline (without Mg<sup>2+</sup> and Ca<sup>2+</sup>), pH 7.4, 150mM NaCl, 0.02% sodium azide and 50% glycerol.

## Product Images

---



Western blot analysis of extracts from mouse brain cells, using PPP1R16B antibody.