

PACO22531

---

## Product Information

**Size:**

100ul

**Reactivity:**

Human

**Source:**

Rabbit

**Isotype:**

IgG

**Applications:**

ELISA, WB

**Recommended dilutions:**

ELISA:1:2000-1:10000, WB:1:500-1:3000

**Protein Background:**

Putative C to U editing enzyme whose physiological substrate is not yet known By similarity.

**Gene ID:**

APOBEC4

**Uniprot**

Q8WW27

**Synonyms:**

utative C->U-editing enzyme APOBEC-4; EC 3.5.4. -; Apolipoprotein B mRNA-editing enzyme catalytic polypeptide-like 4; APOBEC4; C1orf169

**Immunogen:**

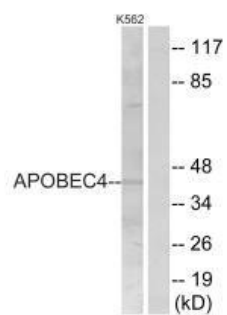
Synthesized peptide derived from internal of human APOBEC4.

**Storage:**

Rabbit IgG in phosphate buffered saline (without Mg<sup>2+</sup> and Ca<sup>2+</sup>), pH 7.4, 150mM NaCl, 0.02% sodium azide and 50% glycerol.

## Product Images

---



Western blot analysis of extracts from K562 cells, using APOBEC4 antibody.