

REPS1 Antibody



PACO22542

Product Information

Size:

100ul

Reactivity:

Human

Source:

Rabbit

Isotype:

IgG

Applications:

ELISA, WB

Recommended dilutions:

ELISA:1:2000-1:10000, WB:1:500-1:3000

Protein Background:

May coordinate the cellular actions of activated EGF receptors and Ral-GTPases By similarity.

Gene ID:

REPS1

Uniprot

Q96D71

Synonyms:

RALBP1; RALBP1 associated Eps domain containing 1; RalBP1-associated Eps domain-containing protein 1; RalBP1-interacting protein 1; REPS1

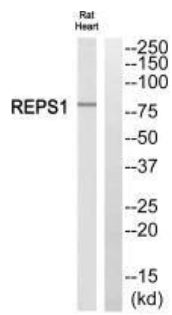
Immunogen:

Synthesized peptide derived from C-terminal of human REPS1.

Storage:

Rabbit IgG in phosphate buffered saline (without Mg²⁺ and Ca²⁺), pH 7.4, 150mM NaCl, 0.02% sodium azide and 50% glycerol.

Product Images



Western blot analysis of extracts from rat heart cells, using REPS1 antibody.