

RAPGEF5 Antibody



PACO22545

Product Information

Size:

100ul

Reactivity:

Human, Mouse

Source:

Rabbit

Isotype:

IgG

Applications:

ELISA, WB

Recommended dilutions:

ELISA:1:2000-1:10000, WB:1:500-1:3000

Protein Background:

Guanine nucleotide exchange factor (GEF) for RAP1A, RAP2A and MRAS/M-Ras-GTP. Its association with MRAS inhibits Rap1 activation.

Gene ID:

RAPGEF5

Uniprot

Q92565

Synonyms:

GFR; guanine nucleotide exchange factor for Rap1; M-Ras-regulated GEF; M-Ras-regulated Rap GEF; MR-GEF

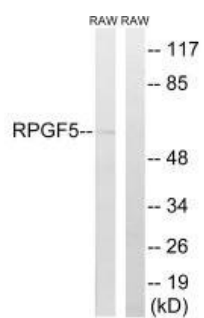
Immunogen:

Synthesized peptide derived from internal of human RAPGEF5.

Storage:

Rabbit IgG in phosphate buffered saline (without Mg²⁺ and Ca²⁺), pH 7.4, 150mM NaCl, 0.02% sodium azide and 50% glycerol.

Product Images



Western blot analysis of extracts from RAW264.7 cells, using RAPGEF5 antibody.