

ALDH1A2 Antibody



PACO22566

Product Information

Size:

100ul

Reactivity:

Human, Mouse, Rat

Source:

Rabbit

Isotype:

IgG

Applications:

ELISA, WB

Recommended dilutions:

ELISA:1:2000-1:10000, WB:1:500-1:3000

Protein Background:

Recognizes as substrates free retinal and cellular retinol-binding protein-bound retinal. Does metabolize octanal and decanal but does not metabolize citral, benzaldehyde, acetaldehyde and propanal efficiently By similarity.

Gene ID:

ALDH1A2

Uniprot

O94788

Synonyms:

AL1A2; aldehyde dehydrogenase 1 family; member A2; aldehyde dehydrogenase 1A2; aldehyde dehydrogenase family 1 member A2

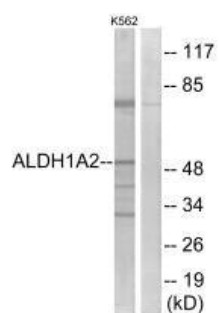
Immunogen:

Synthesized peptide derived from internal of humanALDH1A2.

Storage:

Rabbit IgG in phosphate buffered saline (without Mg²⁺ and Ca²⁺), pH 7.4, 150mM NaCl, 0.02% sodium azide and 50% glycerol.

Product Images



Western blot analysis of extracts from K562 cells, using ALDH1A2 antibody.