

# ARHGAP11A Antibody



PACO22567

---

## Product Information

**Size:**

100ul

**Reactivity:**

Human

**Source:**

Rabbit

**Isotype:**

IgG

**Applications:**

ELISA, WB

**Recommended dilutions:**

ELISA:1:2000-1:10000, WB:1:500-1:3000

**Protein Background:**

**Gene ID:**

ARHGAP11A

**Uniprot**

Q6P4F7

**Synonyms:**

Rho-type GTPase-activating protein 11A; GAP (1-12); KIAA0013; MGC70740; RHGBA

**Immunogen:**

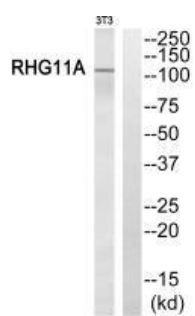
Synthesized peptide derived from internal of human RHG11A.

**Storage:**

Rabbit IgG in phosphate buffered saline (without Mg<sup>2+</sup> and Ca<sup>2+</sup>), pH 7.4, 150mM NaCl, 0.02% sodium azide and 50% glycerol.

## Product Images

---



Western blot analysis of extracts from NIH/3T3 cells, using RHG11A antibody.