

ARHGEF11 Antibody



PACO22571

Product Information

Size:

100ul

Reactivity:

Human

Source:

Rabbit

Isotype:

IgG

Applications:

ELISA, WB

Recommended dilutions:

ELISA:1:2000-1:10000, WB:1:500-1:3000

Protein Background:

May play a role in the regulation of RhoA GTPase by guanine nucleotide-binding alpha-12 (GNA12) and alpha-13 (GNA13). Acts as guanine nucleotide exchange factor (GEF) for RhoA GTPase and may act as GTPase-activating protein (GAP) for GNA12 and GNA13. Involved in neurotrophin-induced neurite outgrowth.

Gene ID:

ARHGEF11

Uniprot

O15085

Synonyms:

ARHGB; glutamate transporter EAAT4-associated protein 48; GTRAP48; PDZ-RhoGEF; rho guanine exchange factor (GEF) 11

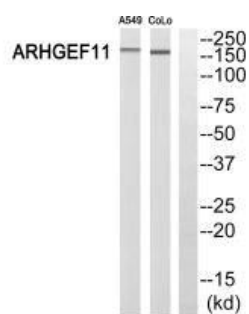
Immunogen:

Synthesized peptide derived from N-terminal of human ARHGEF11.

Storage:

Rabbit IgG in phosphate buffered saline (without Mg²⁺ and Ca²⁺), pH 7.4, 150mM NaCl, 0.02% sodium azide and 50% glycerol.

Product Images



Western blot analysis of extracts from A549 cells and COLO 205 cells, using ARHGEF11 antibody.