

ARHGEF16 Antibody



PACO22573

Product Information

Size:

100ul

Reactivity:

Human

Source:

Rabbit

Isotype:

IgG

Applications:

ELISA, WB

Recommended dilutions:

ELISA:1:2000-1:10000, WB:1:500-1:3000

Protein Background:

Guanyl-nucleotide exchange factor of the RHO GTPase stimulating the exchange of RHO G-associated GDP for GTP. May play a role in chemotactic cell migration by mediating the activation of RAC1 by EPHA2. May also activate CDC42 and mediate activation of CDC42 by the viral protein HPV16 E6.

Gene ID:

ARHGEF16

Uniprot

Q5VV41

Synonyms:

ARHGEF16; ARHGG; GEF16; NBR; Rho guanine exchange factor (GEF) 16

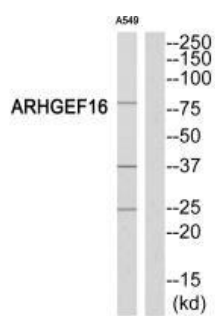
Immunogen:

Synthesized peptide derived from Internal of human ARHGEF16.

Storage:

Rabbit IgG in phosphate buffered saline (without Mg²⁺ and Ca²⁺), pH 7.4, 150mM NaCl, 0.02% sodium azide and 50% glycerol.

Product Images



Western blot analysis of extracts from A549 cells, using ARHGEF16 antibody.