

# ARHGEF2 Antibody



PACO22576

---

## Product Information

**Size:**

100ul

**Reactivity:**

Human, Rat

**Source:**

Rabbit

**Isotype:**

IgG

**Applications:**

ELISA, WB

**Recommended dilutions:**

ELISA:1:2000-1:10000, WB:1:500-1:3000

**Protein Background:**

**Gene ID:**

ARHGEF2

**Uniprot**

Q92974

**Synonyms:**

GEF-H1; GEFH1; Guanine nucleotide exchange factor GEF-H1; proliferating cell nucleolar antigen p40; rho/rac guanine nucleotide exchange factor 2

**Immunogen:**

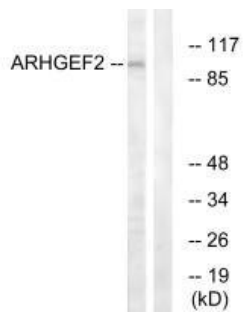
Synthesized peptide derived from internal of human ARHGEF2.

**Storage:**

Rabbit IgG in phosphate buffered saline (without Mg<sup>2+</sup> and Ca<sup>2+</sup>), pH 7.4, 150mM NaCl, 0.02% sodium azide and 50% glycerol.

## Product Images

---



Western blot analysis of extracts from RAW264.7 cells, using ARHGEF2 antibody.