

PACO22579

Product Information

Size:

100ul

Reactivity:

Human, Mouse

Source:

Rabbit

Isotype:

IgG

Applications:

ELISA, WB

Recommended dilutions:

ELISA:1:2000-1:10000, WB:1:500-1:3000

Protein Background:

Catalyzes the synthesis of N-acetyl-L-aspartyl-L-glutamate (NAAG) and N-acetyl-L-aspartyl-L-glutamyl-L-glutamate.

Gene ID:

RIMKLA

Uniprot

Q8IXN7

Synonyms:

ribosomal protein S6 modification-like A; RIMKA;

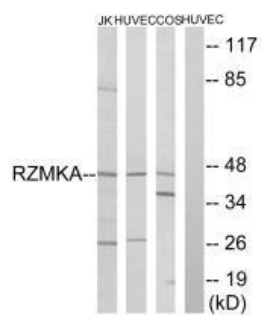
Immunogen:

Synthesized peptide derived from internal of human RIMKA.

Storage:

Rabbit IgG in phosphate buffered saline (without Mg²⁺ and Ca²⁺), pH 7.4, 150mM NaCl, 0.02% sodium azide and 50% glycerol.

Product Images



Western blot analysis of extracts from Jurkat cells, HuvEc cells and COS cells, using RIMKA antibody.