

SEPT2 Antibody



PACO22589

Product Information

Size:

100ul

Reactivity:

Human

Source:

Rabbit

Isotype:

IgG

Applications:

ELISA, WB

Recommended dilutions:

ELISA:1:2000-1:10000, WB:1:500-1:3000

Protein Background:

Gene ID:

37500

Uniprot

Q15019

Synonyms:

Protein NEDD5; Septin-2; Neural precursor cell expressed developmentally down-regulated protein 5; DIFF6; KIAA0158

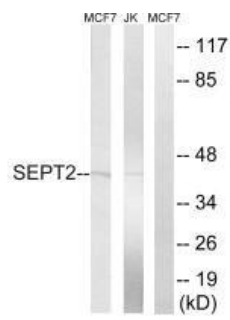
Immunogen:

Synthesized peptide derived from internal of human SEPT2.

Storage:

Rabbit IgG in phosphate buffered saline (without Mg²⁺ and Ca²⁺), pH 7.4, 150mM NaCl, 0.02% sodium azide and 50% glycerol.

Product Images



Western blot analysis of extracts from Jurkat cells and MCF-7 cells, using SEPT2 antibody.