

PRSS33 Antibody



PACO22591

Product Information

Size:

100ul

Reactivity:

Human, Mouse

Source:

Rabbit

Isotype:

IgG

Applications:

ELISA, WB

Recommended dilutions:

ELISA:1:2000-1:10000, WB:1:500-1:3000

Protein Background:

Serine protease that has amidolytic activity, cleaving its substrates before Arg residues.

Gene ID:

PRSS33

Uniprot

Q8NF86

Synonyms:

Serine protease 33 [Precursor]; EC 3.4.21. -; Serine protease EOS; PRSS33;

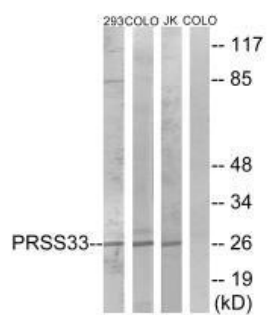
Immunogen:

Synthesized peptide derived from internal of human PRSS33.

Storage:

Rabbit IgG in phosphate buffered saline (without Mg²⁺ and Ca²⁺), pH 7.4, 150mM NaCl, 0.02% sodium azide and 50% glycerol.

Product Images



Western blot analysis of extracts from 293 cells, COLO cells and Jurkat cells, using PRSS33 antibody.