

PLK5 Antibody



PACO22596

Product Information

Size:

100ul

Reactivity:

Human

Source:

Rabbit

Isotype:

IgG

Applications:

ELISA, WB

Recommended dilutions:

ELISA:1:2000-1:10000, WB:1:500-1:3000

Protein Background:

Inactive serine/threonine-protein kinase that plays a role in cell cycle progression and neuronal differentiation.

Gene ID:

PLK5

Uniprot

Q496M5

Synonyms:

Serine/threonine-protein kinase PLK5 EC 2.7.11.21; Polo-like kinase 5 PLK5;

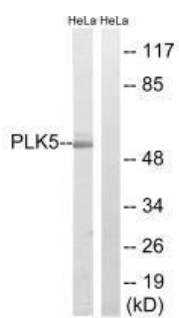
Immunogen:

Synthesized peptide derived from internal of human PLK5.

Storage:

Rabbit IgG in phosphate buffered saline (without Mg²⁺ and Ca²⁺), pH 7.4, 150mM NaCl, 0.02% sodium azide and 50% glycerol.

Product Images



Western blot analysis of extracts from COLO cells, Jurkat cells and HeLa cells, using PLK5 antibody.