

# PPP4R1L Antibody



PACO22603

---

## Product Information

**Size:**

100ul

**Reactivity:**

Human

**Source:**

Rabbit

**Isotype:**

IgG

**Applications:**

ELISA, WB

**Recommended dilutions:**

ELISA:1:2000-1:10000, WB:1:500-1:3000

**Protein Background:**

May be a regulatory subunit of serine/threonine-protein phosphatase 4.

**Gene ID:**

PPP4R1L

**Uniprot**

Q9P1A2

**Synonyms:**

F118B; FAM118B; FLJ21103;

**Immunogen:**

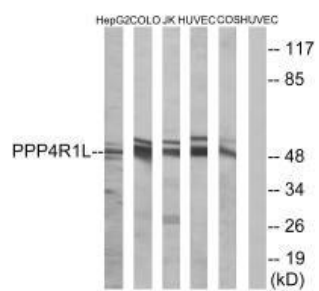
Synthesized peptide derived from internal of human PPP4R1L.

**Storage:**

Rabbit IgG in phosphate buffered saline (without Mg<sup>2+</sup> and Ca<sup>2+</sup>), pH 7.4, 150mM NaCl, 0.02% sodium azide and 50% glycerol.

## Product Images

---



Western blot analysis of extracts from HepG2 cells, COLO cells, Jurkat cells, HUVEC cells and COS cells, using PPP4R1L antibody.