

# SH2D2A Antibody



PACO22608

---

## Product Information

**Size:**

100ul

**Reactivity:**

Human

**Source:**

Rabbit

**Isotype:**

IgG

**Applications:**

ELISA, WB

**Recommended dilutions:**

ELISA:1:2000-1:10000, WB:1:500-1:3000

**Protein Background:**

Could be a T-cell-specific adapter protein involved in the control of T-cell activation. May play a role in the CD4-p56-LCK-dependent signal transduction pathway. Could also play an important role in normal and pathological angiogenesis. Could be an adapter protein that facilitates and regulates interaction of KDR with effector proteins important to endothelial cell survival and proliferation.

**Gene ID:**

SH2D2A

**Uniprot**

Q9NP31

**Synonyms:**

SCAP; SH2 domain containing adapter; SH2 domain protein 2A; SH2 domain-containing 2A; SH22A

**Immunogen:**

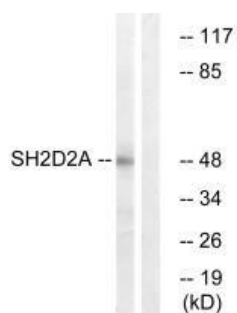
Synthesized peptide derived from internal of human SH2D2A.

**Storage:**

Rabbit IgG in phosphate buffered saline (without Mg<sup>2+</sup> and Ca<sup>2+</sup>), pH 7.4, 150mM NaCl, 0.02% sodium azide and 50% glycerol.

## Product Images

---



Western blot analysis of extracts from HepG2 cells, using SH2D2A antibody.