

# SH3RF3 Antibody



PACO22611

---

## Product Information

**Size:**

100ul

**Reactivity:**

Human, Mouse

**Source:**

Rabbit

**Isotype:**

IgG

**Applications:**

ELISA, WB

**Recommended dilutions:**

ELISA:1:2000-1:10000, WB:1:500-1:3000

**Protein Background:**

Belongs to the SH3RF family.

**Gene ID:**

SH3RF3

**Uniprot**

Q8TEJ3

**Synonyms:**

FLJ00204; Plenty of SH3s 2; plenty of SH3s-2; POSH2; SH3 domain containing ring finger 3

**Immunogen:**

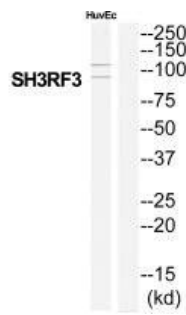
Synthesized peptide derived from C-terminal of human SH3RF3.

**Storage:**

Rabbit IgG in phosphate buffered saline (without Mg<sup>2+</sup> and Ca<sup>2+</sup>), pH 7.4, 150mM NaCl, 0.02% sodium azide and 50% glycerol.

## Product Images

---



Western blot analysis of extracts from HuvEc cells, using SH3RF3 antibody.