

SIRPB1 Antibody



PACO22613

Product Information

Size:

100ul

Reactivity:

Human

Source:

Rabbit

Isotype:

IgG

Applications:

ELISA, WB

Recommended dilutions:

ELISA:1:2000-1:10000, WB:1:500-1:3000

Protein Background:

Immunoglobulin-like cell surface receptor involved in the negative regulation of receptor tyrosine kinase-coupled signaling processes. Participates also in the recruitment of tyrosine kinase SYK.

Gene ID:

SIRPB1

Uniprot

O00241

Synonyms:

SIRP-beta-1; CD172b antigen;

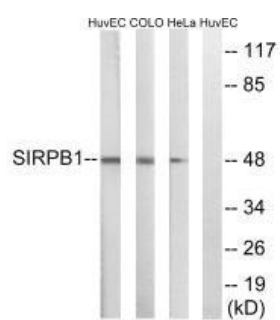
Immunogen:

Synthesized peptide derived from internal of human SIRPB1.

Storage:

Rabbit IgG in phosphate buffered saline (without Mg²⁺ and Ca²⁺), pH 7.4, 150mM NaCl, 0.02% sodium azide and 50% glycerol.

Product Images



Western blot analysis of extracts from HuvEc cells, COLO cells and HeLa cells, using SIRPB1 antibody.