

PACO22623

---

## Product Information

**Size:**

100ul

**Reactivity:**

Human

**Source:**

Rabbit

**Isotype:**

IgG

**Applications:**

ELISA, WB

**Recommended dilutions:**

ELISA:1:2000-1:10000, WB:1:500-1:3000

**Protein Background:**

Transports pantothenate, biotin and lipoate in the presence of sodium.

**Gene ID:**

SLC5A6

**Uniprot**

Q9Y289

**Synonyms:**

SMVT; solute carrier family 5 (sodium-dependent vitamin transporter); member 6;

**Immunogen:**

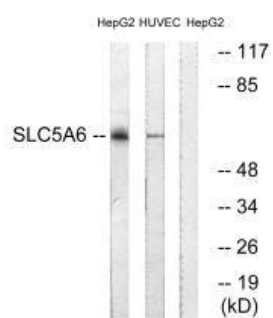
Synthesized peptide derived from internal of human SLC5A6.

**Storage:**

Rabbit IgG in phosphate buffered saline (without Mg<sup>2+</sup> and Ca<sup>2+</sup>), pH 7.4, 150mM NaCl, 0.02% sodium azide and 50% glycerol.

## Product Images

---



Western blot analysis of extracts from HepG2 cells and HUVEC cells, using SLC5A6 antibody.