

SLC4A10/SLC4A8 Antibody



PACO22625

Product Information

Size:

100ul

Reactivity:

Human, Mouse

Source:

Rabbit

Isotype:

IgG

Applications:

ELISA, WB

Recommended dilutions:

ELISA:1:2000-1:10000, WB:1:500-1:3000

Protein Background:

Electrogenic sodium/bicarbonate cotransporter in exchange for intracellular chloride. Plays an important role in regulating intracellular pH By similarity.

Gene ID:

SLC4A10/SLC4A8

Uniprot

Q6U841/Q2Y0W8

Synonyms:

electroneutral Na⁺- driven Cl⁻-HCO₃⁻ exchanger; electroneutral sodium bicarbonate exchanger 1; k-NBC3; NBC; NBC3

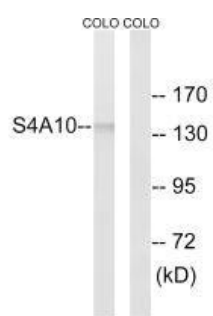
Immunogen:

Synthesized peptide derived from internal of human SLC4A8/10.

Storage:

Rabbit IgG in phosphate buffered saline (without Mg²⁺ and Ca²⁺), pH 7.4, 150mM NaCl, 0.02% sodium azide and 50% glycerol.

Product Images



Western blot analysis of extracts from COLO cells, using S4A10 antibody.