

TUBGCP4 Antibody



PACO22633

Product Information

Size:

100ul

Reactivity:

Human, Mouse

Source:

Rabbit

Isotype:

IgG

Applications:

ELISA, WB

Recommended dilutions:

ELISA:1:2000-1:10000, WB:1:500-1:3000

Protein Background:

Gamma-tubulin complex is necessary for microtubule nucleation at the centrosome.

Gene ID:

TUBGCP4

Uniprot

Q9UGJ1

Synonyms:

Gamma-tubulin complex component 4; GCP-4; hGCP4; Hgrip76; h76p

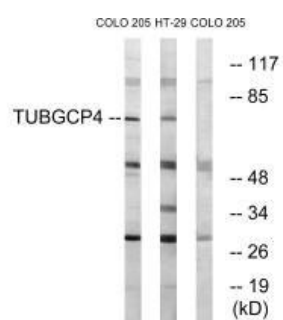
Immunogen:

Synthesized peptide derived from internal of human TUBGCP4.

Storage:

Rabbit IgG in phosphate buffered saline (without Mg²⁺ and Ca²⁺), pH 7.4, 150mM NaCl, 0.02% sodium azide and 50% glycerol.

Product Images



Western blot analysis of extracts from COLO cells and HT-29 cells, using TUBGCP4 antibody.