

# STK39 Antibody



PACO22636

---

## Product Information

**Size:**

100ul

**Reactivity:**

Human, Mouse

**Source:**

Rabbit

**Isotype:**

IgG

**Applications:**

ELISA, WB

**Recommended dilutions:**

ELISA:1:2000-1:10000, WB:1:500-1:3000

**Protein Background:**

May act as a mediator of stress-activated signals.

**Gene ID:**

STK39

**Uniprot**

Q9UEW8

**Synonyms:**

DCHT; EC 2.7.11.1; Serine/threonine-protein kinase 39; SPAK; Ste-20 related kinase

**Immunogen:**

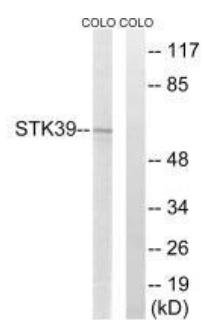
Synthesized peptide derived from internal of human STK39.

**Storage:**

Rabbit IgG in phosphate buffered saline (without Mg<sup>2+</sup> and Ca<sup>2+</sup>), pH 7.4, 150mM NaCl, 0.02% sodium azide and 50% glycerol.

## Product Images

---



Western blot analysis of extracts from COLO cells, using STK39 antibody.