

USP38 Antibody



PACO22670

Product Information

Size:

100ul

Reactivity:

Human

Source:

Rabbit

Isotype:

IgG

Applications:

ELISA, WB

Recommended dilutions:

ELISA:1:2000-1:10000, WB:1:500-1:3000

Protein Background:

Deubiquitinating enzyme exhibiting a preference towards 'Lys-63'-linked Ubiquitin chains.

Gene ID:

USP38

Uniprot

Q8NB14

Synonyms:

Ubiquitin carboxyl-terminal hydrolase 38; Ubiquitin thioesterase 38; Ubiquitin-specific-processing protease 38; Deubiquitinating enzyme 38; HP43.8KD

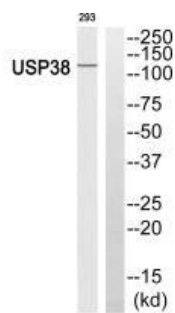
Immunogen:

Synthesized peptide derived from internal of human USP38.

Storage:

Rabbit IgG in phosphate buffered saline (without Mg²⁺ and Ca²⁺), pH 7.4, 150mM NaCl, 0.02% sodium azide and 50% glycerol.

Product Images



Western blot analysis of extracts from 293 cells, using USP38 antibody.